

**PACE** 

**Yacht  
Tenders**

[www.PaceMarine.ca](http://www.PaceMarine.ca)  
[Sales@PaceMarine.ca](mailto:Sales@PaceMarine.ca)



T300 shown

The PACE Yacht Tender series of RIBS are designed to be comfortable, high performance recreational craft designed to last with quality materials. PACE Tenders are constructed with rigid aluminum hulls and large diameter tubes, making them stable platforms for a wide range of recreational and watersports activities. All PACE Tenders feature a secondary floor with durable non skid surface as well as an oversized bow locker.

**PACE**   
**Yacht Tenders**

# PACE T300

[www.PaceMarine.ca](http://www.PaceMarine.ca)  
[Sales@PaceMarine.ca](mailto:Sales@PaceMarine.ca)



## SPECIFICATIONS

LOA: 3.0 m  
Beam: 170 cm  
Dry weight: 56kg  
Tube Diameter: 43cm  
Tube Chambers: 3  
Max HP: 15

## CONSTRUCTION

Valmex<sup>®</sup> PVC or ORCA<sup>®</sup> Hypalon Tubes  
Welded seams (PVC)  
Self draining cockpit  
High tensile chromated & powder coated hull  
Meets ISO 6185-3

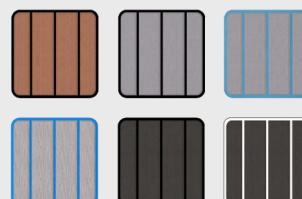
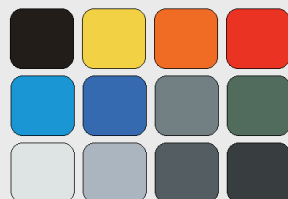
## STANDARD EQUIPMENT

Wear strake and grab handles  
Oversized double bow locker  
Thwart seat  
Reinforced Lifting points and tow eyes  
Flush Mount non-return valves  
Choice of EVA foam teak non-slip flooring  
Foot pump, oars, repair kit  
Keel guard

## OPTIONAL EQUIPMENT

Boat cover  
Outboard motor and trailer  
Custom design elements

## AVAILABLE TUBE AND FLOORING COLOURS



# PACE T300

[www.PaceMarine.ca](http://www.PaceMarine.ca)  
[Sales@PaceMarine.ca](mailto:Sales@PaceMarine.ca)

